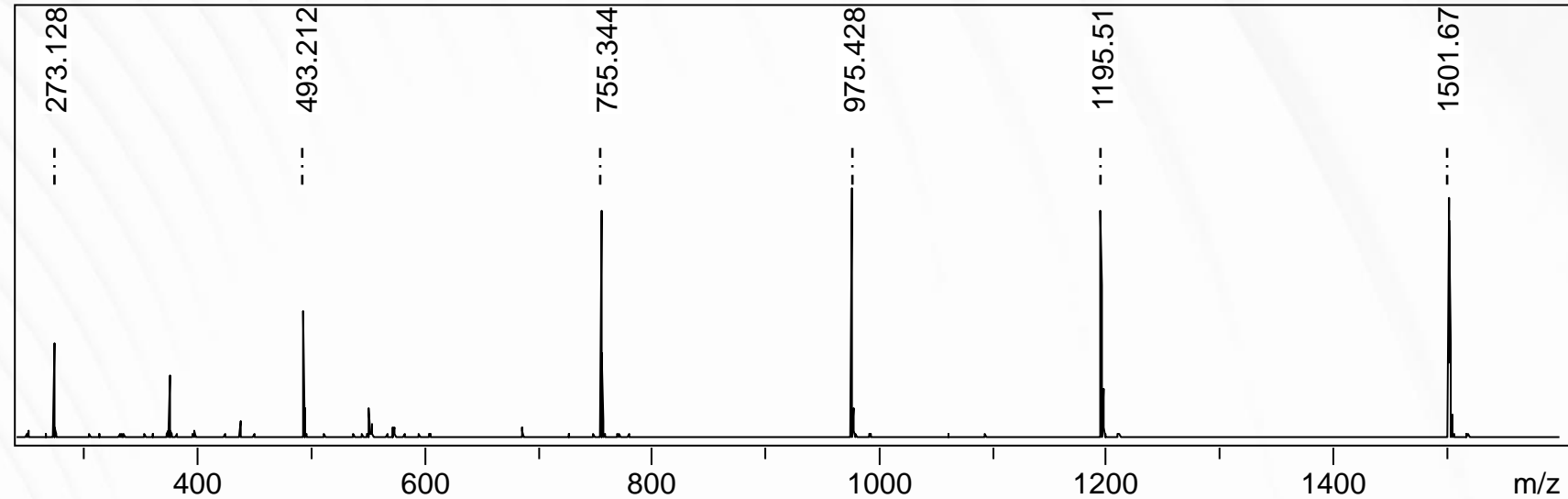


SpheriCal<sup>®</sup> Peptide Low is a dendrimer-based MALDI-TOF MS calibration standard providing four monodisperse mass signals for efficient, highly accurate calibration, covering the mass range between 250 and 1 600 Da.



**Number of calibration points:**

6

**Mass range:**

250 – 1 500 Da

**Components:**

Identifier	Chemical formula	Monoisotopic mass +Na <sup>+</sup>
PFS1A	C <sub>14</sub> H <sub>18</sub> O <sub>4</sub>	273.11028 Da
PFS1B	C <sub>26</sub> H <sub>30</sub> O <sub>8</sub>	493.18384 Da
PFS1C	C <sub>41</sub> H <sub>48</sub> O <sub>12</sub>	755.304346 Da
PFS1D	C <sub>53</sub> H <sub>60</sub> O <sub>16</sub>	975.377905 Da
PFS1E	C <sub>65</sub> H <sub>72</sub> O <sub>20</sub>	1195.45146 Da
PFS1F	C <sub>82</sub> H <sub>94</sub> O <sub>25</sub>	1501.59819 Da

**Compatible solvents:**

THF, ACN, CHCl<sub>3</sub>, DCM, DMSO, etc

**Compatible matrices:**

DHB, HCCA, Sinapic acid, DCTB, 9NA, HABA, Ditrinol, NALDI, graphite, etc